

**Infrastructure Development**  
Department: Infrastructure Development  
GAUTENG PROVINCE

Enquiries: Mr. K. Ojageer  
Email: [Kemraj.Ojageer@gauteng.gov.za](mailto:Kemraj.Ojageer@gauteng.gov.za)

The Chief Executive Officer  
Independent Development Trust,  
Glenwood Office Park,  
Corner Oberon and Sprite Streets,  
Faerie Glen,  
Pretoria  
0001

**Attention: Ms. Thembi Ndwamutsu**

**RE: FOLLOW UP TO THE MEETING HELD AT THE DEPARTMENT OF  
INFRASTRUCTURE DEVELOPMENT HEAD OF DEPARTMENT'S OFFICE ON  
22 DECEMBER 2011 AT 1100 HOURS.**

Please find herewith attached the standard layout plan for Grade R for implementation on your Grade R projects.

The Department of Infrastructure Development (DID) hereby confirm that you should proceed with the assessments and implementation of the 163 Grade R schools projects where there are no issues or matters arising. You are hereby requested to furnish this Department in a detailed report of the issues or matters arising on those Grade R schools projects that you would have encountered.

Assessments and implementation of the 42 toilets on school projects should be expedited.

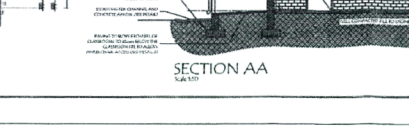
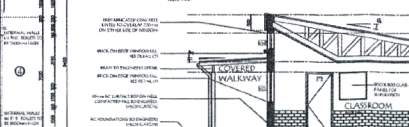
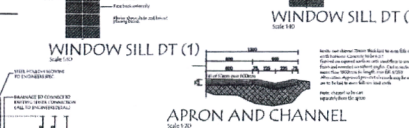
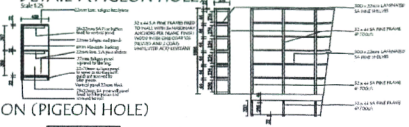
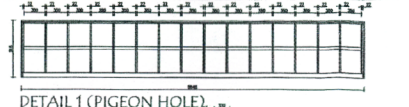
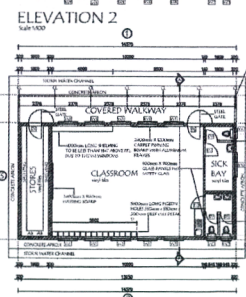
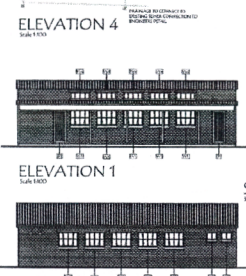
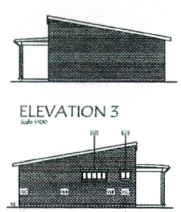
During the implementation of these projects, you are advised to comply with all new Built Environment regulations including SANS regulations pertaining to disability persons.

The Department of Infrastructure Development hereby reminds you to submit monthly project reports as stated in clause 4.8 of the Service Delivery Agreement. Minutes of all project meetings should be forwarded to DID and all project stakeholders within the shortest possible time after the execution of such meetings.

Yours Sincerely,

**K. Ojageer**  
**Deputy Director General**

Date: 11/01/2012



### WINDOW SCHEDULE

NO.	SYMBOL	DESCRIPTION	QTY
W1	1	Standard window with frame	1
W2	2	Standard window with frame	2
W3	3	Standard window with frame	3
W4	4	Standard window with frame	4

### DOOR SCHEDULE

NO.	SYMBOL	DESCRIPTION	QTY
D1	1	Standard door with frame	1
D2	2	Standard door with frame	2
D3	3	Standard door with frame	3

**NOTE:**  
Standard window mechanisms to be fitted to allow the windows to open a maximum of 200mm to prevent frames from hitting their heads on the frames (THIS IS FOR THE W1 WINDOW ONLY)

**GENERAL NOTE:**  
IF THERE ARE ANY DIMENSIONS ON THE PLANS AND THE CONTRACTOR HAS ANY QUESTIONS ON THE QUANTITIES OF THE WORK OR ON THE QUALITY OF THE WORK, HE SHOULD CONTACT THE ARCHITECT IMMEDIATELY. THE CONTRACTOR SHALL BE RESPONSIBLE FOR OBTAINING ALL NECESSARY PERMITS AND APPROVALS FROM THE RELEVANT AUTHORITIES. THE CONTRACTOR SHALL BE RESPONSIBLE FOR OBTAINING ALL NECESSARY PERMITS AND APPROVALS FROM THE RELEVANT AUTHORITIES.

**FLOOR NOTES:**  
FLOOR FINISH SHALL BE AS SHOWN ON THE PLANS. ALL FLOORS SHALL BE FINISHED TO A FINISH LEVEL OF 100mm ABOVE FINISHED GROUND LEVEL. ALL FLOORS SHALL BE FINISHED TO A FINISH LEVEL OF 100mm ABOVE FINISHED GROUND LEVEL.

**AREA SCHEDULE:**  
COVERED WALKWAY: 22sqm  
CLASSROOM: 77sqm  
SICK BAY AND TOILETS: 16sqm  
STORE ROOM: 18sqm  
**TOTAL SQUARES: 133sqm**

AUGUST 2011 ISSUED FOR CONSTRUCTION

052010 - 200 0